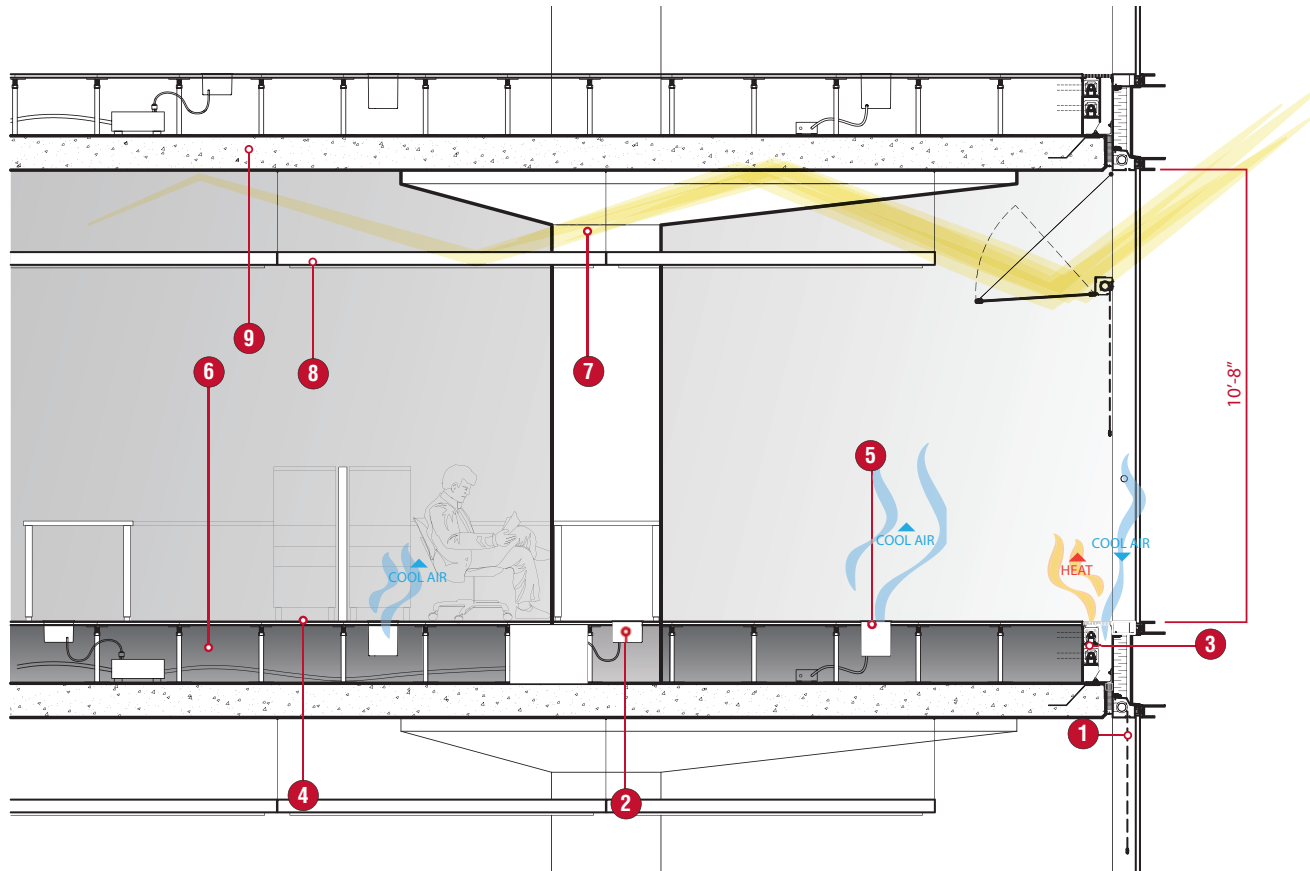


# SUSTAINABLE BUILDING SYSTEMS



**1. WINDOW SHADING:** Interior roller blinds at all glazed walls. Exterior horizontal aluminum fin type sun shading at the south facing façades. Exterior vertical sun shading at the west façade.

**2. TELECOMMUNICATIONS:** A communications pathway system allows pathways for connection to off-site networks. Riser pathways can accommodate voice and data cabling, LANs, fibre optics, broadband data and video distribution.

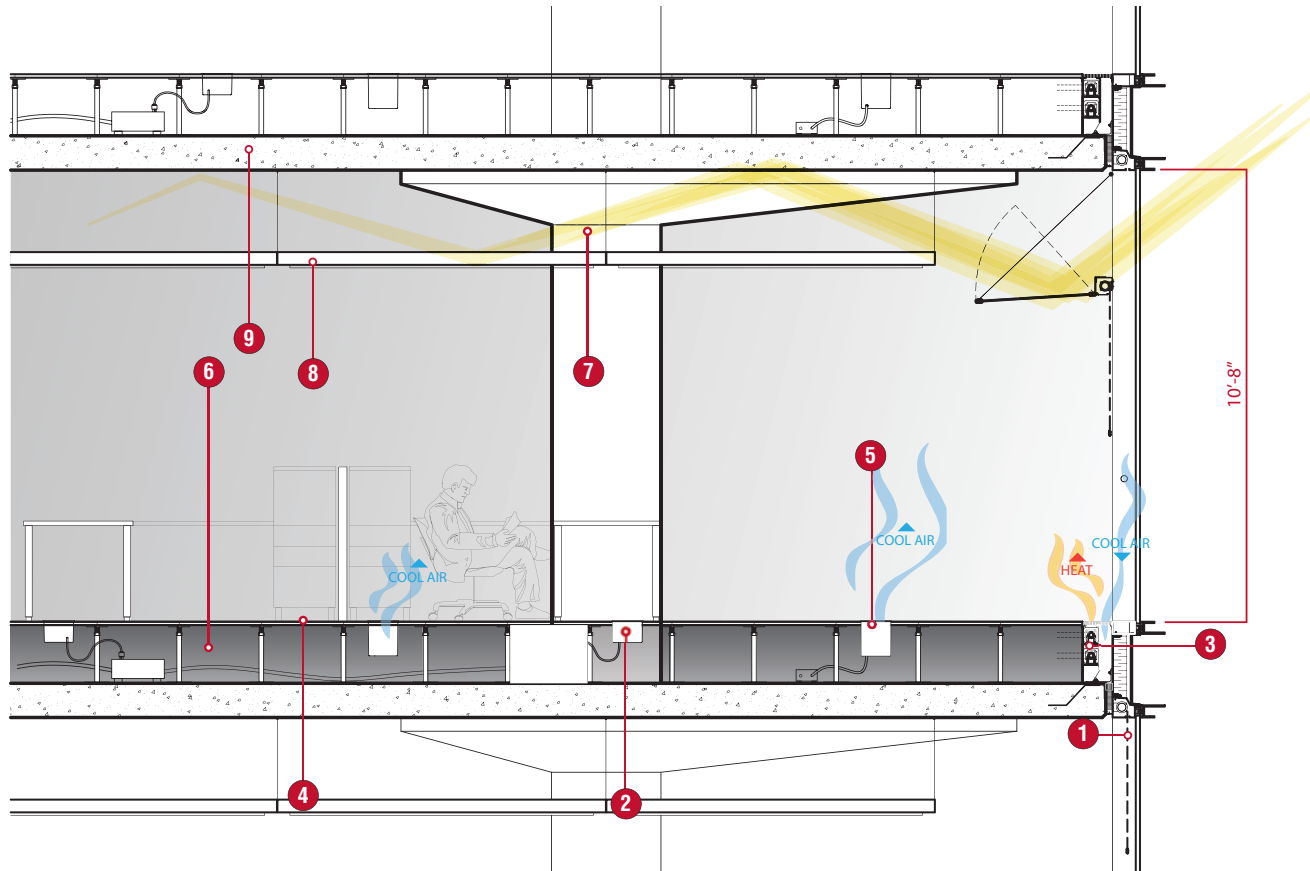
**3. H.V.A.C. HEATING:** The building envelope on typical office floors at Airport Crossing is heated via fin tube hot water radiation generally zone controlled on a per bay basis to match the cooling zones at the envelope.

**4. ELECTRICAL POWER:** Electrical power shall be brought to each floor of the building and terminated at electrical panels within the core Electrical Room including an appropriate quantity of empty conduit running from the electrical panels to the under floor space for future distribution by the Tenants.

**5. H.V.A.C. COOLING:** Automatic VAV in-floor dampers with local temperature sensors will address the building envelope and will be provided for each bay at the perimeter where loads vary. Tenants may add additional VAV perimeter control zones if so desired. An independent fresh air system provides fresh air to meet current ASHRAE 62 Ventilation requirements and is capable of providing up to 20 cfm per person.



# SUSTAINABLE BUILDING SYSTEMS



**6. H.V.A.C. COOLING:** Typical floors shall be cooled by a down discharge VAV compartmental unit; each unit shall be fitted with VFD for volume control. Supply air from the under floor plenum shall be released into the occupied space by means of manual and automatic VAV in floor terminals.

**7. LIGHTING:** All office floors include suspended direct/indirect linear fluorescent luminaires in open office areas. This allows for energy efficient lighting of spaces with no glare throughout Airport Crossing interiors.

**8. LIGHTING:** The luminaires contain addressable dimming ballasts with daylight sensors for control of perimeter luminaires and central computer for master control. The lighting system will provide an average illumination of 300 Lux at 750 AFF based on Airport Crossing's open office concept.

**9. CEILINGS:** Thick concrete slab ceilings act as a heat-sink for even, efficient cooling.

